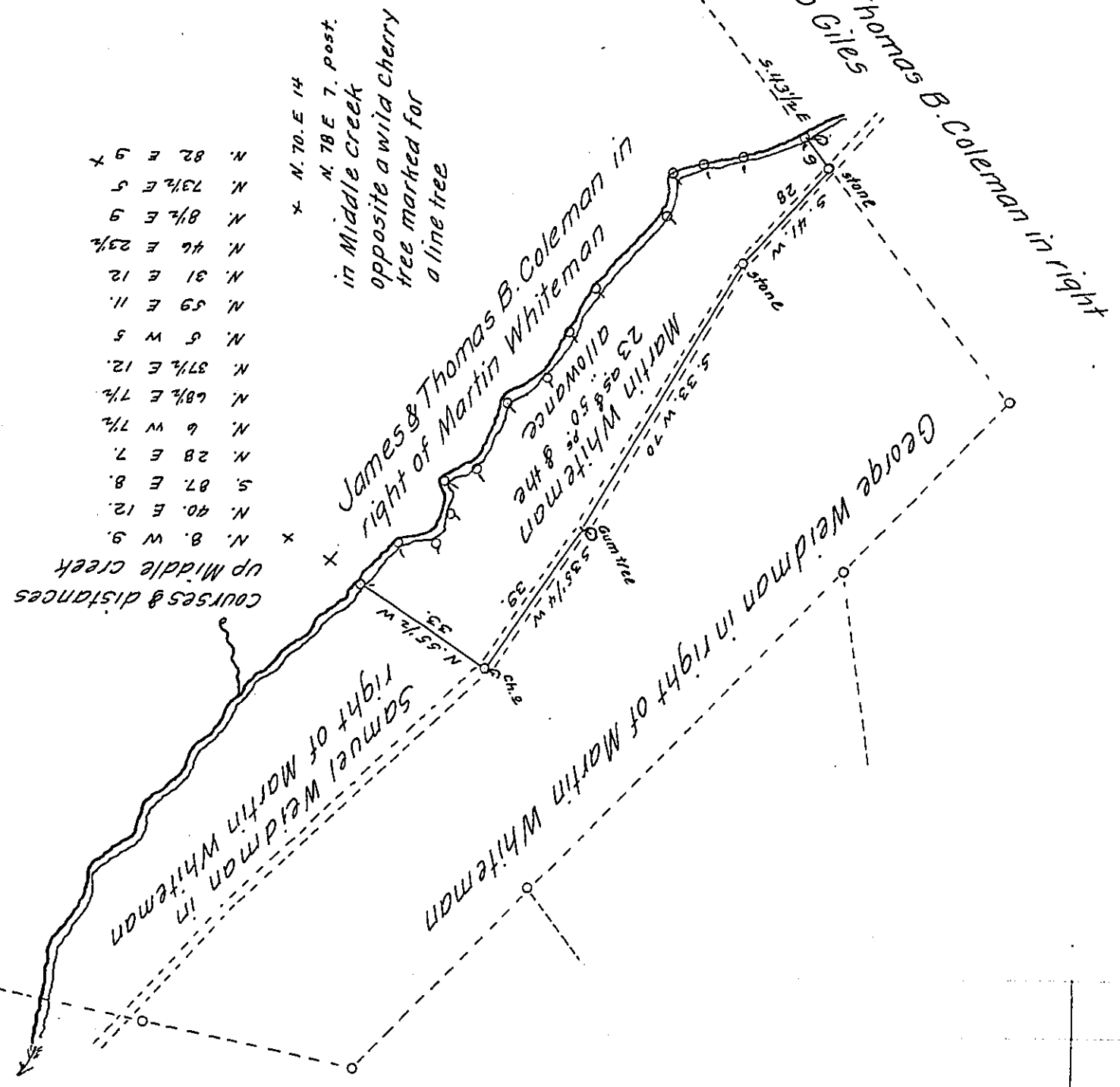


FORM NO 1.



A draught of a Tract of Land Situated in Elizabeth Township Lancaster County. containing twenty three Acres and one quarter and ten-Perches and the usual allowance of six per cent. for roads &c. Part of a Larger Tract of 336-30 ^{as. & ps} and the usual Allowance &c. by Warrant dated the 13th day of February 1748 granted to Martin Whiteman, Surveyed the above Tract of Land for Peter Weidman the 14th day of April 1819.

J. Jacob Hibshman D.S.

To Gabriel Hiester Esq. }
 Surveyor General

IN TESTIMONY that the above is a copy of the original remaining on file in the Department of Internal Affairs of Pennsylvania, made conformably to an Act of Assembly approved the 16th day of February, 1833, I have hereunto set my Hand and caused the Seal of said Department to be affixed at Harrisburg, this twenty seventh day of May 1907.

Henry Howell
 Secretary of Internal Affairs.